



Shush Baffle™

Suspended Acoustic fabric Baffles

Shush Baffle™ Acoustic Baffle has been designed to offer the ideal solution for correcting echo and reverberation in areas where vertical suspension is required.

With its minimalistic design finish, the Shush Baffle™ vertical acoustic baffles are ideally suited for open plan offices, schools, restaurants, corridors, atriums, reception areas and showrooms, etc.

Soundhush®
innovative sound solutions

www.soundhush.com

What is Shush Baffle™?

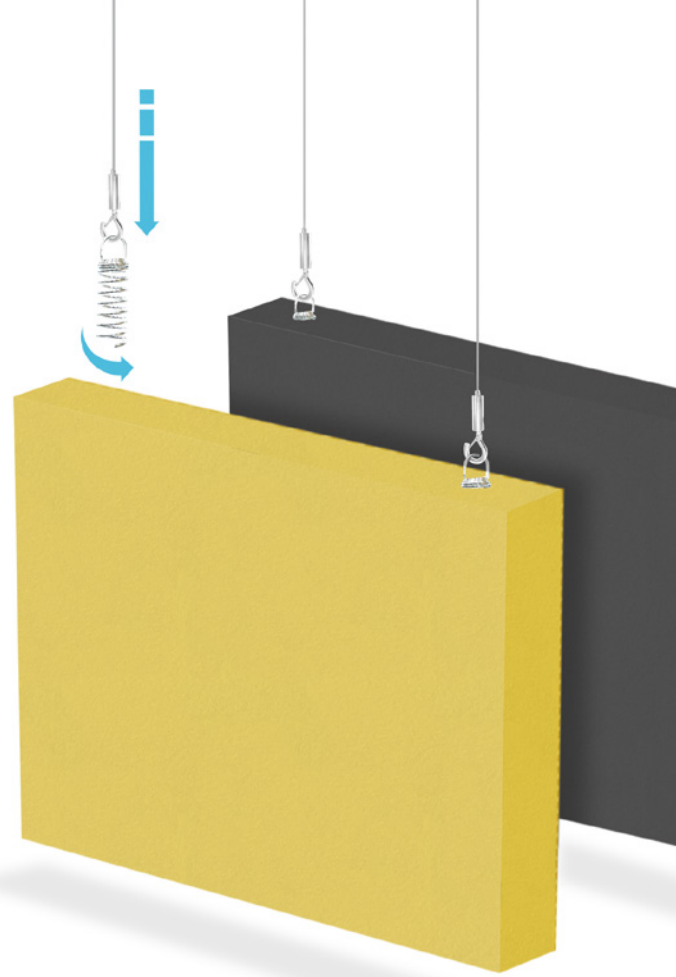
Shush Baffle™ is a lightweight acoustic baffle manufactured from high density fibre glass with a fabric finish with excellent sound absorption characteristics. The baffles are frameless by design to offer a pleasing aesthetic alternative to the common suspended ceiling system.

Shush Baffle™ provides superb acoustic performance whilst allowing the concrete soffit to be fully exposed for energy-efficient natural cross ventilation cooling. The baffles offer a dual function of acting as solar shading by diffusing natural daylight from the reflective surface. Shush Baffle™ is fabricated on all sides and will show a fabric joint line on 3 edges of the baffle.

ADVANTAGES OF SHUSH BAFFLE™:

- High level of sound absorption performance - **CLASS A**
- Available in 49 colours as standard
- Quick and simple installation
- Can be installed to various heights
- Various sizes can be used to create an aesthetic design
- Customised sizes available up to 2400mm length

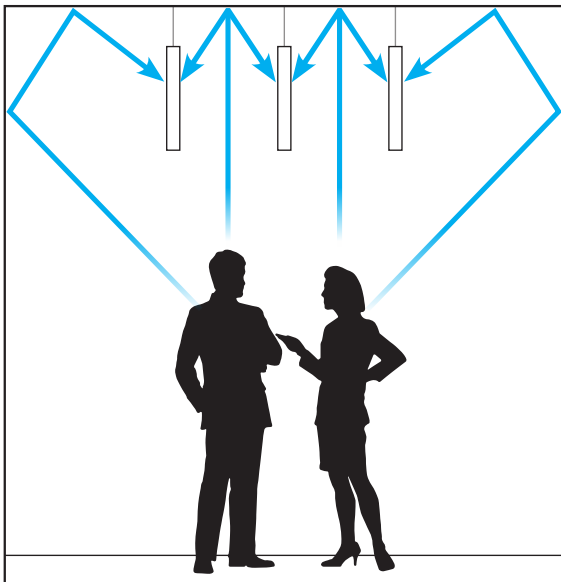
!!! Please note, Shush Baffle™ are not designed to be used in swimming pools or outdoors environments !!!







Technical + Acoustic Performance



CLEANING

Light dirt marks may be removed by using a vacuum with a soft brush attachment. A small area should be tested before doing the rest of the area to ensure that the baffle surface is not adversely affected.



WEIGHT

Our Shush Baffle™ panels weigh in at 4kg/m². All weights are given as approximations.



FIRE

Shush Baffle™ core board has been tested and offers EN 13501-1:2018 A2-s1, d0 and Class O fire rating to BS476: Part 6.

Fabric facing complies with:

Sonus: EN1350-1 Class B, s1, d0

Cara: Class 1 to BS476: Part 7 and EN1350-1 Class B, s1, d0

Class A Acoustic Absorber – Shush Baffle™ 40mm Thick

Frequency (Hz)	125	250	500	1000	2000	4000	NRC	Sound Absorption Class
Shush Baffle™	0.70	0.60	0.90	1.00	1.00	1.00	0.90	A

Fabric Colours

Whatever your décor – Whatever your style – we are sure to have you covered with our extensive range of fabric colours.

SONUS COLOUR RANGE



Voice FHR02



Audio FHR06



Melody FHR07



Soul FHR13



Beat FHR03



Song FHR01



Pop FHR09



Acoustic FHR12



Chorus FHR17



Verse FHR16



Amp FHR05



Music FHU04



Vocal FHU08



Chime FHU10



Rap FHU11



Classical FHU14



Lyric FHU15

!!! Please note that the above colors are representative of the actual colours which may vary in shade or texture. We are able to provide actual fabric colour card upon request !!!

Fabric Colours

Whatever your décor – Whatever your style – we are sure to have you covered with our extensive range of fabric colours.

CARA COLOUR RANGE



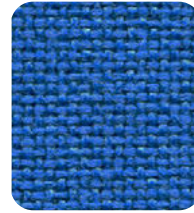
Vit EJ184



Glass EJ004



Dolphin EJ105



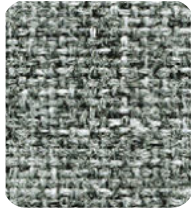
Galilee EJ125



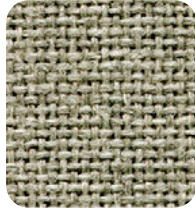
Adriatic EJ154



Inverness EJ175



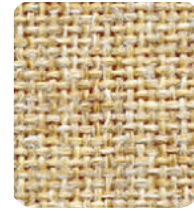
Lead EJ104



Spray EJ033



Lomond EJ192



Austen EJ173



Beltane EJ193



Shetland EJ191



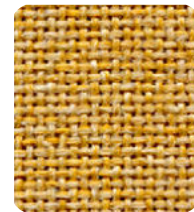
Lossie EJ197



Tummel EJ038



Pitlochry EJ076



Maree EJ195



Fairisle EJ186



Staffa EJ185



Lora EJ187



Ronay EJ189



Easdale EJ188



Walten EJ011



Portland EJ016



Merrick EJ048



Chaucer EJ172



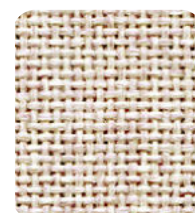
Hillswick EJ190



Denny EJ196



Black EJ138



Clan EJ169



Carron EJ015



Lerwick EJ194

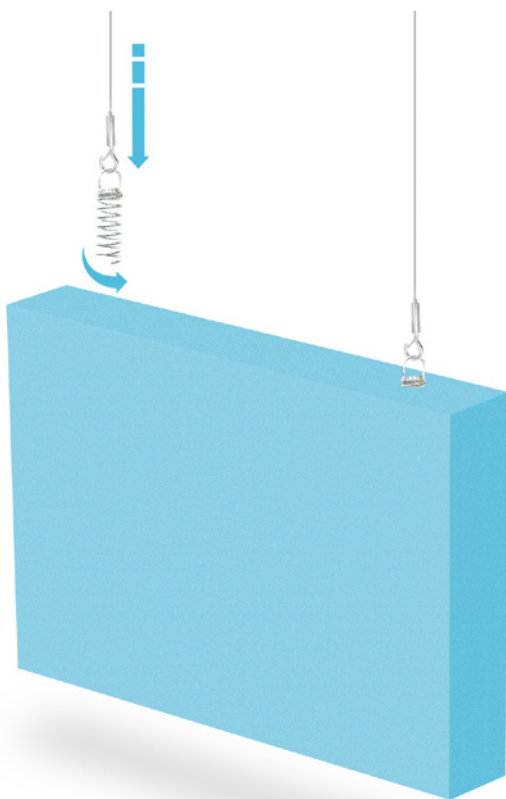


Cluanie EJ180

!!! Please note that the above colors are representative of the actual colours which may vary in shade or texture. We are able to provide actual fabric colour card upon request !!!



Installation



Shush Baffle™ Hanging Kit



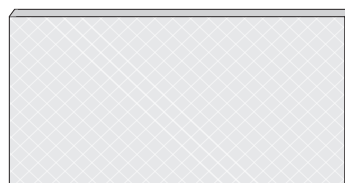
1200 x 300 x 40mm



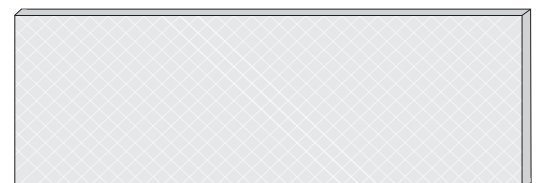
1800 x 200 x 40mm



1800 x 300 x 40mm



1200 x 600 x 40mm



1800 x 600 x 40mm



2400 x 300 x 40mm

The installation method for our Shush Baffle™ is easy and quick. In fact, it does not require a specialist fitter to carry out the installation.

Each Shush Baffle™ will be supplied with 2/3 spiral hooks for each baffle depending on the size of the baffle. The spiral hooks should be inserted approx. 150mm to 200mm from the edge of the baffle. These should be cork screwed into the edge of the baffle, making sure the spiral hook does not appear to the face of the baffle.

Dimensional tolerance : +/- 3mm



Product Specification

1. Product

Install with the following panels:

Shush Baffle™ Acoustic Baffle: Wide:mm High: mm

Panel colour to be: *Sonus*:

Cara:

2. Delivery, Storage & Handling

Protect Shush Baffle™ from excessive moisture when storing, and handling.

4. Installation

Install Shush Baffle™ Acoustic Baffles in locations indicated, level and in alignment with other baffles. Comply with manufacturers written instructions for installation of panels using type of fixing accessories indicated as above.

5. Cleaning

A. After completion of installation of Shush Baffle™, remove dust from baffles.

B. Remove surplus material, rubbish, and debris resulting from panel installation, on completion of the work, and leave areas of installation in a neat and clean condition.

6. Supplier

Shush Baffle™ - Acoustic panel system as supplied by:

SoundHush Ltd, Atlantic House, Gomm Road, High Wycombe, Bucks, HP13 7DJ, United Kingdom

Tel: 01494 422 482 E. info@soundhush.com W. www.soundhush.com



Soundhush Ltd • Atlantic House • Gomm Road • High Wycombe • Bucks • HP13 7DJ • UK
Tel: 01494 422 482 E. info@soundhush.com W. www.soundhush.com